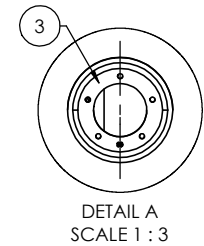
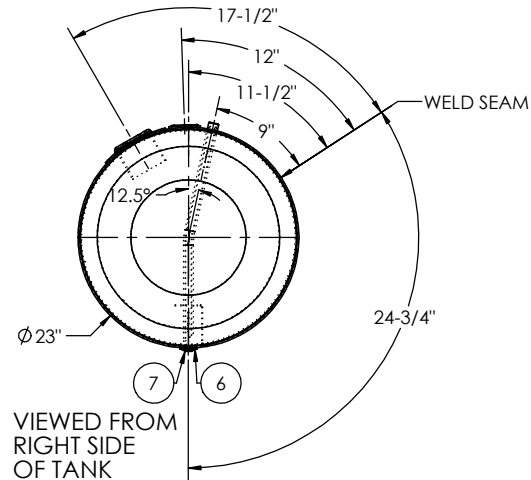
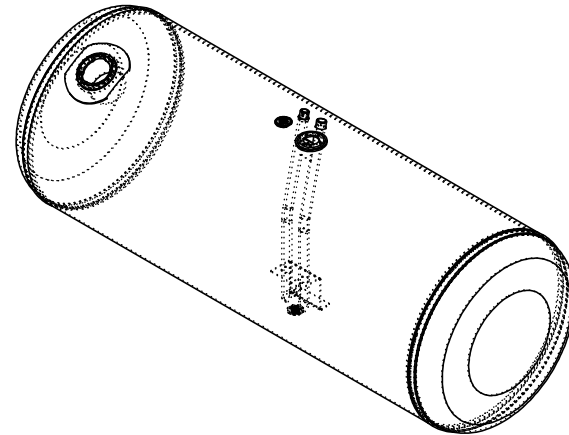
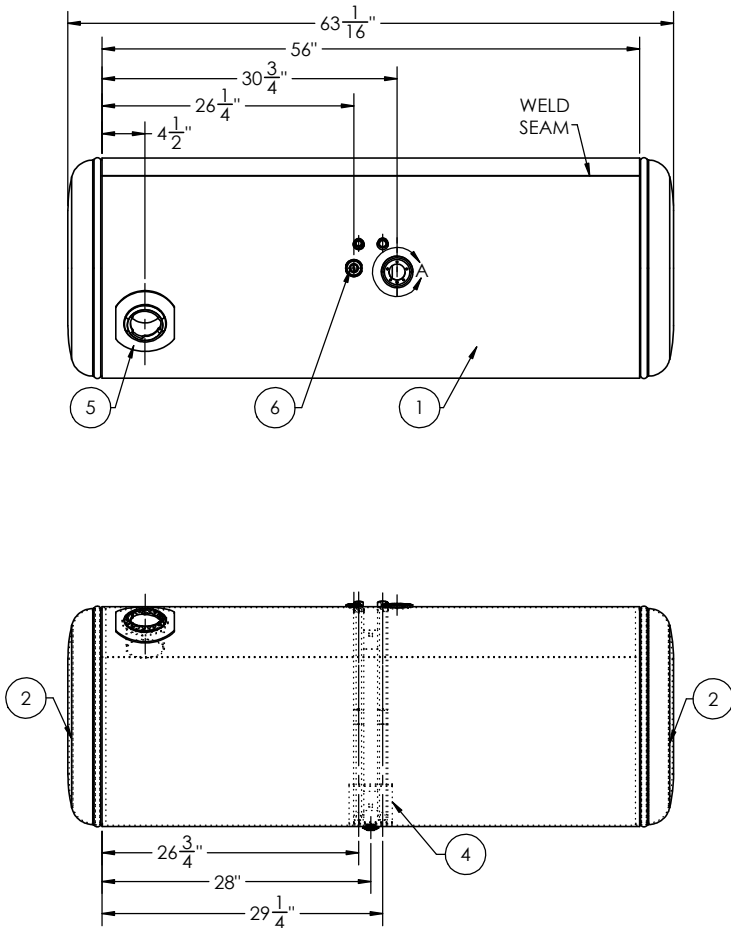


CUSTOMER SIGNATURE:

DATE:

IN AN EFFORT TO ENSURE ACCURACY, PLEASE REVIEW YOUR DRAWING DIMENSIONS AND FITTING SIZES FOR POSSIBLE ERRORS AND OMISSIONS. CALL WITH ANY CORRECTIONS BEFORE SIGNING THIS DRAWING. ALL TANKS DESIGNED AND/OR BUILT, IN PART OR COMPLETE, BY ALUMITANK OR ANY OF ITS PEOPLE ARE CERTIFIED FOR USE ONLY WITH DISTILLATE, HYDRAULIC, OR WATER. ANY VARIATIONS OF USE OR MODIFICATIONS OF THE TANK ARE PROHIBITED. CUSTOMER SIGNATURE ON DOCUMENT/DRAWING INDICATES AGREEMENT BY SIGNER OR RECIPIENT OF TANK AND HOLDS ALUMITANK HARMLESS.

CUSTOMER NAME:	SIDE OF TRUCK:	SHOP #:	PARTS:
FINISH:	CAPACITY:	SERIAL #:	
CHASSIS STYLE:		SHIP DATE:	



ITEM NO.	PART NUMBER	DESCRIPTION	QTY.
1	00012381	1/8" TANK BARREL	1
2	ECP-3680012200	23" MILGRADE ALUMINUM PETERBILT STYLE END CAP	2
3	BSE-00182210	CURVED 90 MILGRADE ALUMINUM SENDER BASE	1
4	DTA-311236820	23" MILGRADE PETERBILT TUBE ASSEMBLY	1
5	FLN-110022200	MILGRADE ALUMINUM PETERBILT FILL NECK	1
6	FLG-050220	1/2" NPTF MILGRADE ALUMINUM FLANGE	2
7	94135	1/2" SOCKET PIPE PLUG 3/4" TAPER NPTF ZINC	1

TITLE: 23" x 56"		UNLESS OTHERWISE SPECIFIED:		NAME		DATE	
SIZE C	REV	QC	INITIALS	DIMENSIONS ARE IN INCHES			
		PSI		TOLERANCES:			
		DIMS		FRACTIONS: ±			
		PARTS		ANGULAR: MATCH ± BEND ±			
		TAG		TWO PLACE DECIMAL ±			
PKG		THREE PLACE DECIMAL ±					
MATERIAL: 5052 H32 ALUMINUM				INTERPRET GEOMETRIC TOLERANCING PER:			
FINISH: SEE BOM				G.A.			
DO NOT SCALE DRAWING				COMMENTS:			
DWG. NO. 00012380				REV. A			
SCALE: 1:10				WEIGHT: 66.65			
SHEET 1 OF 1							

AlumiTank[®]
THE FUEL TANK SPECIALIST

11317 N. US HWY 14 HARVARD, IL 60033 815-943-6649

800-652-6630 FAX 855-774-6918 WWW.ALUMITANK.COM INFO@ALUMITANK.COM