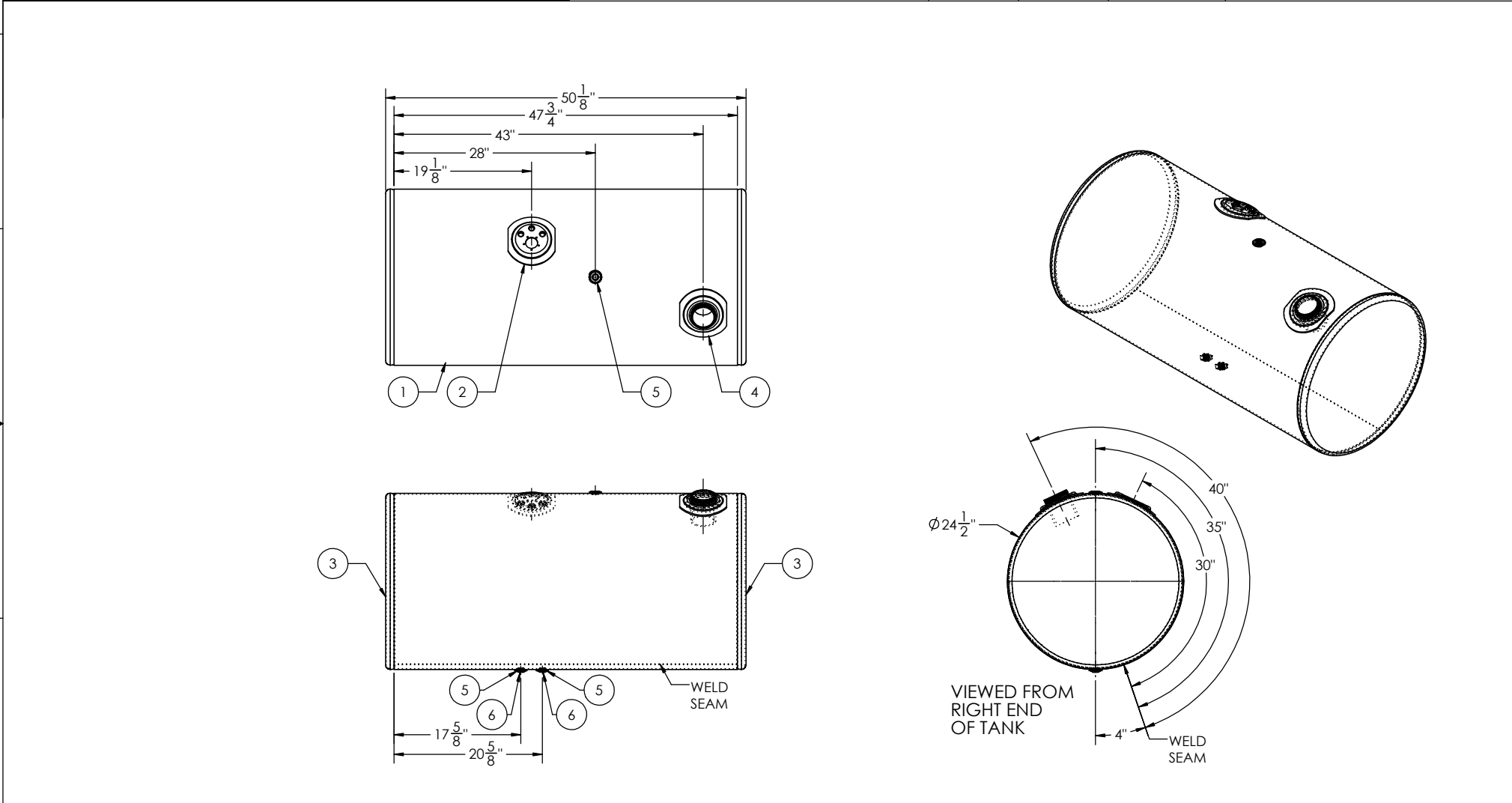


CUSTOMER SIGNATURE: _____		DATE: _____		CUSTOMER NAME: _____		SIDE OF TRUCK: _____		SHOP #: _____		PARTS: _____	
<p>IN AN EFFORT TO ENSURE ACCURACY, PLEASE REVIEW YOUR DRAWING DIMENSIONS AND FITTING SIZES FOR POSSIBLE ERRORS AND OMISSIONS. CALL WITH ANY CORRECTIONS BEFORE SIGNING THIS DRAWING. ALL TANKS DESIGNED AND/OR BUILT, IN PART OR COMPLETE, BY ALUMITANK OR ANY OF ITS PEOPLE ARE CERTIFIED FOR USE ONLY WITH DISTILLATE, HYDRAULIC, OR WATER. ANY VARIATIONS OF USE OR MODIFICATIONS OF THE TANK ARE PROHIBITED. CUSTOMER SIGNATURE ON DOCUMENT/DRAWING INDICATES AGREEMENT BY SIGNER OR RECIPIENT OF TANK AND HOLDS ALUMITANK HARMLESS.</p>				FINISH: _____		CAPACITY: _____		SERIAL #: _____			
				CHASSIS STYLE: _____				SHIP DATE: _____			



ITEM NO.	PART NUMBER	DESCRIPTION	QTY.
1	00012114	1/8" TANK BARREL	1
2	ADP-832310	POLISHED ALUMINUM KENWORTH ADAPTER PLATE	1
3	ECP-3920013100	24 1/2" POLISHED ALUMINUM END CAP	2
4	FLN-801212300	POLISHED ALUMINUM KENWORTH FILL NECK	1
5	FLG-050230	1/2" NPTF POLISHED ALUMINUM FLANGE	3
6	94135	1/2" SOCKET PIPE PLUG 3/4" TAPER NPTF ZINC	2

TITLE: _____				UNLESS OTHERWISE SPECIFIED: DIMENSIONS ARE IN INCHES TOLERANCES: FRACTIONS: ± ANGULAR: MACH ± BEND ± TWO PLACE DECIMAL THREE PLACE DECIMAL ±				DRAWN: _____ CHECKED: _____ ENG APPR: _____ MFG APPR: _____ QA: _____		NAME: _____ DATE: _____	
SIZE C		REV		QC PSI DIMS		INITIALS		MATERIAL 5052 H32 ALUMINUM		COMMENTS: _____	
PROPRIETARY AND CONFIDENTIAL THE INFORMATION CONTAINED IN THIS DRAWING IS THE SOLE PROPERTY OF ALUMITANK. ANY REPRODUCTION IN PART OR AS A WHOLE WITHOUT THE WRITTEN PERMISSION OF ALUMITANK IS PROHIBITED.				PARTS TAG PKG		FINISH SEE BOM DO NOT SCALE DRAWING		11317 N. US HWY 14 HARVARD, IL 60033 815-943-6649		800-652-6630 FAX 855-774-6918 WWW.ALUMITANK.COM INFO@ALUMITANK.COM	
				DWG. NO. 00012113		REV. B		SCALE: 1:10 WEIGHT: 59.52 SHEET 1 OF 1			