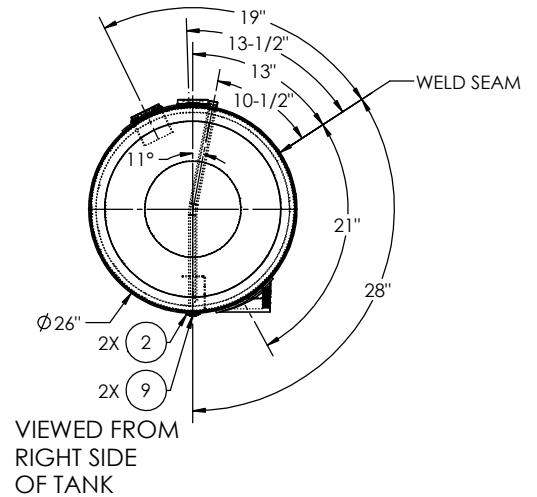
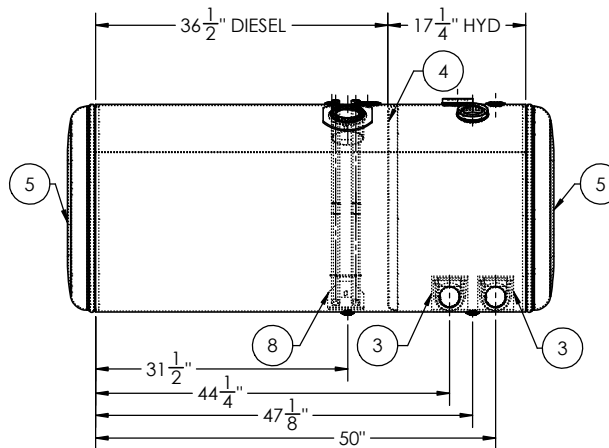
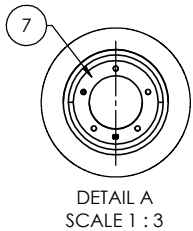
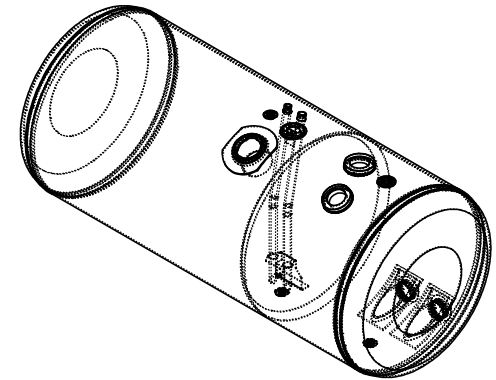
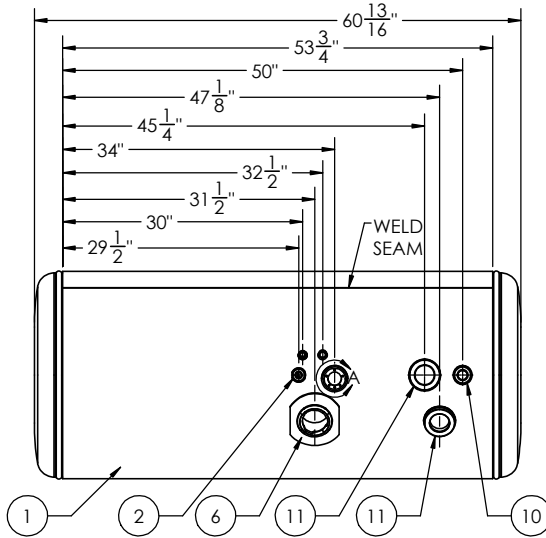


GALLONS	96	91	52	52
LITERS	362	344	198	198
	TOTAL CAPACITY	USEABLE CAPACITY	TOTAL CAPACITY	USEABLE CAPACITY
	DIESEL FUEL		BIO-DIESEL/ HYDRAULIC/WATER	



ITEM NO.	PART NUMBER	DESCRIPTION	QTY.
1	00035956	1/8" TANK BARREL	1
2	FLG-050220	1/2" NPTF MILGRADE ALUMINUM FLANGE	3
3	COC-0282210	SAE #32 CAST ALUMINUM CASTING	2
4	BHD-416001220	26" MILGRADE ALUMINUM BULKHEAD	1
5	ECP-4160012200	26" MILGRADE ALUMINUM PETERBILT STYLE END CAP	2
6	FLN-110022200	MILGRADE ALUMINUM PETERBILT FILL NECK	1
7	BSE-00182210	CURVED 90 MILGRADE ALUMINUM SENDER BASE	1
8	DTA-311241620	26" MILGRADE PETERBILT TUBE ASSEMBLY	1
9	94135	1/2" SOCKET PIPE PLUG 3/4" TAPER NPTF ZINC	2
10	FLG-070220	1" NPTF MILGRADE ALUMINUM FLANGE	1
11	FLG-00282221	SAE #32 MILGRADE ALUMINUM FLANGE TYPE 1	2

TITLE: 26" D x 53.75" L		UNLESS OTHERWISE SPECIFIED: DIMENSIONS ARE IN INCHES TOLERANCES: FRACTIONAL: ± ANGULAR: MACH ± BEND ± TWO PLACE DECIMAL ± THREE PLACE DECIMAL ±		NAME	DATE
SIZE C	REV	QC	INITIALS	DRAWN	
		PSI		CHECKED	
		DIMS		ENG APPR.	
		PARTS		MFG APPR.	
	TAG			Q.A.	
	PKG			COMMENTS:	
PROPRIETARY AND CONFIDENTIAL THE INFORMATION CONTAINED IN THIS DRAWING IS THE SOLE PROPERTY OF ALUMITANK. ANY REPRODUCTION IN PART OR AS A WHOLE WITHOUT THE WRITTEN PERMISSION OF ALUMITANK IS PROHIBITED.		MATERIAL: 5052 H32 ALUMINUM	FINISH: SEE BOM	11317 N. US HWY 14 HARVARD, IL 60033 815-943-6649 800-652-6630 FAX 855-774-6918 WWW.ALUMITANK.COM INFO@ALUMITANK.COM	
		DWG. NO. 00035955		REV. A	
		SCALE: 1:12 WEIGHT: 86.07 SHEET 2 OF 2			