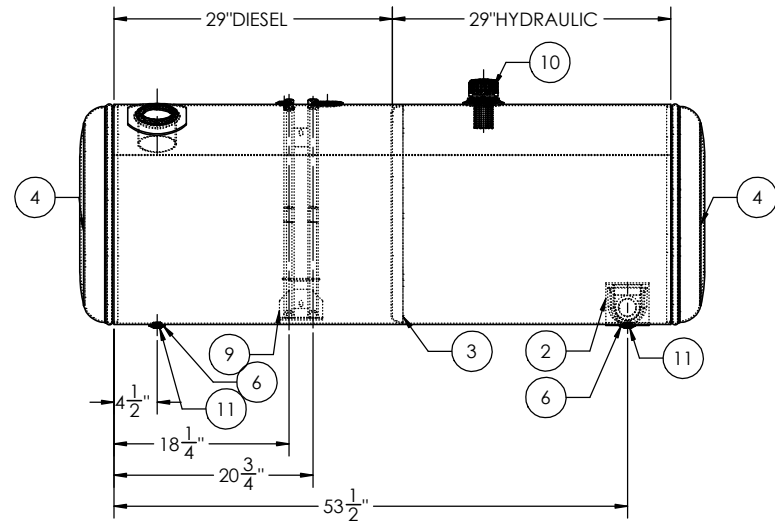
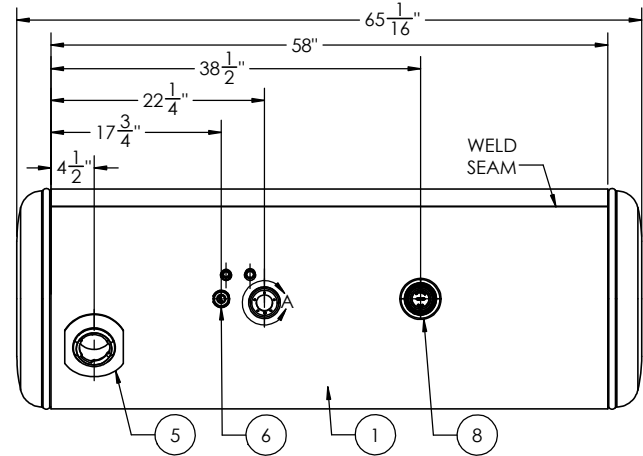
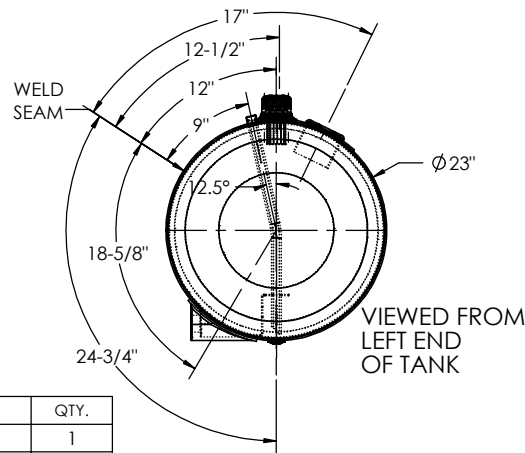
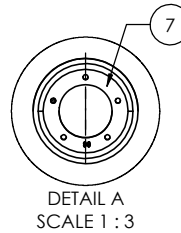
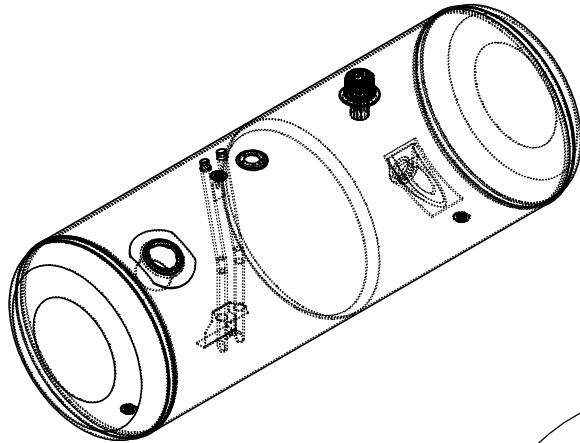


|         |                |                  |                                |                  |
|---------|----------------|------------------|--------------------------------|------------------|
| GALLONS | 61             | 58               | 61                             | 58               |
| LITERS  | 231            | 220              | 231                            | 220              |
|         | TOTAL CAPACITY | USEABLE CAPACITY | TOTAL CAPACITY                 | USEABLE CAPACITY |
|         | DIESEL FUEL    |                  | BIO-DIESEL/<br>HYDRAULIC/WATER |                  |



| ITEM NO. | PART NUMBER    | DESCRIPTION                                   | QTY. |
|----------|----------------|---|------|
| 1        | BRL-AT-PB-1130 | 1/8" TANK BARREL                              | 1    |
| 2        | COC-90210      | 1-1/2" NPTF CAST ALUMINUM CASTING             | 1    |
| 3        | BHD-368001220  | 23" MILGRADE ALUMINUM BULKHEAD                | 1    |
| 4        | ECP-3680013200 | 23" POLISHED ALUMINUM PETERBILT STYLE END CAP | 2    |
| 5        | FLN-110022300  | POLISHED ALUMINUM PETERBILT FILL NECK         | 1    |
| 6        | FLG-050230     | 1/2" NPTF POLISHED ALUMINUM FLANGE            | 3    |
| 7        | BSE-00183210   | CURVED 90 POLISHED ALUMINUM SENDER BASE       | 1    |
| 8        | BSE-00183221   | CURVED POLISHED ALUMINUM HFVC BASE            | 1    |
| 9        | DTA-311236830  | 23" POLISHED PETERBILT TUBE ASSEMBLY          | 1    |
| 10       | VNT-HFVC       | HYD VENT/FILL COMBO                           | 1    |
| 11       | 94135          | 1/2" SOCKET PIPE PLUG 3/4" TAPER NPTF ZINC    | 2    |

PETERBILT PART NUMBER: 11-04884-092T011J

|  |     |  |          |   |      |
|--|-----|--|----------|---|------|
| TITLE: 23" D x 58" L   |     | UNLESS OTHERWISE SPECIFIED:  |          | NAME  | DATE |
| SIZE<br><b>C</b>   | REV | QC   | INITIALS | DRAWN   |      |
|  |     | PSI  |          | CHECKED   |      |
|  |     | DIMS   |          | ENG APPR.   |      |
|  |     | PARTS  |          | MFG APPR.   |      |
| PROPRIETARY AND CONFIDENTIAL<br>THE INFORMATION CONTAINED IN THIS DRAWING IS THE SOLE PROPERTY OF ALUMITANK. ANY REPRODUCTION IN PART OR AS A WHOLE WITHOUT THE WRITTEN PERMISSION OF ALUMITANK IS PROHIBITED. |     | DIMENSIONS ARE IN INCHES<br>TOLERANCES:<br>FRACTIONAL: ±<br>ANGULAR: MACH ± BEND ±<br>TWO PLACE DECIMAL ±<br>THREE PLACE DECIMAL ± |          | COMMENTS:<br>G.A.<br>DATE   |      |
| MATERIAL:<br>5052 H32 ALUMINUM<br>FINISH: SEE BOM<br>DO NOT SCALE DRAWING  |     | INTERPRET GEOMETRIC TOLERANCING PER:   |          | 11317 N. US HWY 14 HARVARD, IL 60033 815-943-6649<br>800-652-6630 FAX 855-774-6918 WWW.ALUMITANK.COM INFO@ALUMITANK.COM |      |
|  |     |  |          | DWG. NO.<br><b>AT-PB-1130</b><br>SCALE: 1:10   WEIGHT: 76.82   SHEET 2 OF 2   |      |

