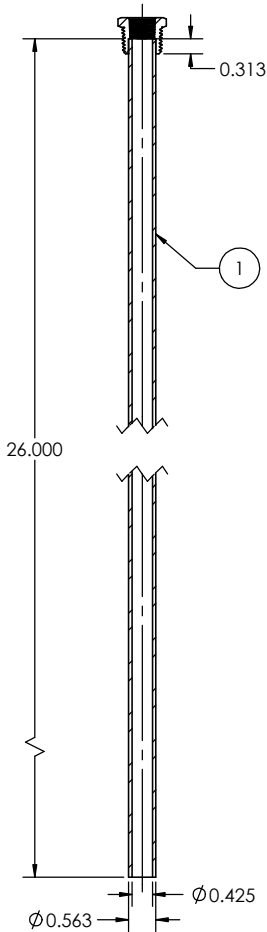
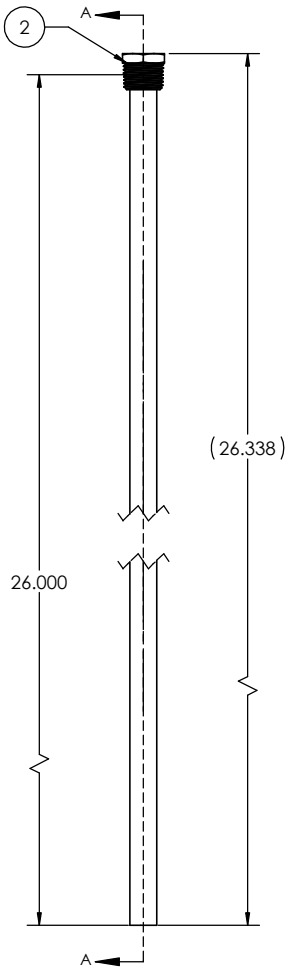
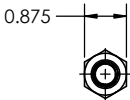
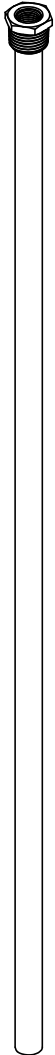


REVISIONS				
ZONE	REV.	DESCRIPTION	DATE	APPROVED
	A	INITIAL RELEASE	07/20/2022	ACB



SECTION A-A



ITEM NO.	PART NUMBER	DESCRIPTION	QTY.
1	PIP-0250-ST-2600	0.5625" OD X 0.068 WALL STEEL PIPING	1
2	00013609	1/2" MALE NPT X 1/4" FEMALE NPT BRASS BUSHING	1

**PROPRIETARY AND CONFIDENTIAL**  
 THE INFORMATION CONTAINED IN THIS DRAWING IS THE SOLE PROPERTY OF ALUMINUM. ANY REPRODUCTION IN PART OR AS A WHOLE WITHOUT THE WRITTEN PERMISSION OF ALUMINUM IS PROHIBITED.

		UNLESS OTHERWISE SPECIFIED:		NAME		DATE		TITLE:  1/2" NPT X 1/4" NPT SOLDERED TUBE	
		DIMENSIONS ARE IN INCHES TOLERANCES: FRACTIONAL: $\pm 1/16$ ANGULAR: MATCH $\pm 0.5$ BEND $\pm$ TWO PLACE DECIMAL: $\pm 0.05$ THREE PLACE DECIMAL: $\pm 0.010$		DRAWN					
				CHECKED					
				ENG APPR:					
				MFG APPR:					
		INTERPRET GEOMETRIC TOLERANCING PER:		Q.A.					
		MATERIAL: Material <not specified>		COMMENTS:					
		FRESH							
		Steel							
NEXT ASSY		USED ON				SIZE		DWG. NO.	
						C		00014710	
								A	